



ST. JOHN LUTHERAN SCHOOL
 The Eagle Express
 January 22-28, 2009
 'Led by God's Grace'



A PRAYER FOR OUR NEW PRESIDENT



Now that the elections and the inauguration of our 44th president are over, I want to invite you to pause for a moment to pray for President-elect Obama. Regardless of which candidate you supported in the election, one thing we can all agree upon is that our new president will need wisdom, strength, courage, and grace. As a family of Christians, we should continue to keep our President, our leaders and our country in our daily prayers.

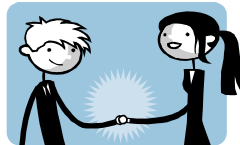
Lord, I lift up to you our new president, Barack Obama.
 Grant him wisdom as he has assumed the leadership of our nation.
 Help him to choose wise counselors as his closest advisors.
 Guide him to know what is just and right and true.
 Use him and the rest of our leaders to help us navigate through the challenges we face.
 Help us as a nation to fulfill our true potential and to be like a 'city upon a hill.'
 O Lord, bless and keep Barack Obama's family in your care.
 Protect them from the dangers and hazards that come with the presidency.
 Finally, Lord, we pray for all who are elected to office at every level in our government,
 Asking that you would prepare them to be servants pursuing and lifting up Christian values.
 Grant them wisdom as they seek to govern and lead us.
 In Jesus' name.
 Amen.

CELEBRATE CHILDREN!!



Last weeks weather conditions prevented our celebrate children fair for our 3rd grade class. We will be featuring them this weekend, January 24 and 25th. Please stop by the fellowship hall during this weekend to see the wonderful works of art, and creative expressions our 3rd graders are doing in their classrooms! Our school is proud to recognize these young children and celebrate their God-given talents!! We are proud of where our students begin their journey with us, grow with us, and leave us to enter into the world of high school, with a firm foundation in Christ. We celebrate the journey of their lives through our "Celebrate Children" fair!!!

BRING A FRIEND TO SCHOOL DAY -- FEBRUARY 6, 2009



On Friday, February 6th, our students here at St. John School are asked to bring a special friend to school with them to share their school day, and to share all the good things St. John's has to offer. On this day, Plymouth Public School is not in session, so we are taking advantage of the day by opening our doors to friends of our students within the community. St. John school will provide our visitors a hot lunch, free of charge, for spending the day with us. For this day to be productive, we do have the following restrictions:

- Only one friend, per child, unless approval has been given by school administration.

- Our invited guests should be 8th grade, or younger. Please, no high school students.
- St. John school is not providing, or organizing, transportation to and from school. If your guest is riding with your child on the bus, please contact the bus company to make appropriate arrangements.
- Your child will need to let their classroom teacher know if they are bringing a guest by no later than **WEDNESDAY, FEBRUARY 4th** so we can provide the extra seating in the classrooms, and make the necessary hot lunch arrangements.

What a wonderful opportunity for your child to share with their friend not only their school day, but the ministry of St. John's. Please encourage your child to bring a friend to school on this day!!

EARLY CHILDHOOD OPEN HOUSE COMING IN FEBRUARY!!!



All parents of 3, 4, 5 or 6 year-old children that would like to have their young children receive a daily Christian-based education; St. John School will be having their Early Childhood Open House on Sunday, February 15th from the end of second service till 2 p.m. The classrooms, and the teachers, will be available for your questions, and you can have your own personal tour of our facilities. You can also register your special child for the 2009–2010 school year. We welcome all new families, and existing school families, to this Open House. If you have any other questions, or concerns, please contact the school office. May God Bless the ministry provided for these special little ones!!

OUR “LED BY GOD’S GRACE” STUDENT AWARDS ...



Last week we recognized our students at St. John's for the gift of **FAITHFULNESS**. One student's name was omitted that we would also like to recognize for the gifts and talents given to her by God:

KINDERGARTEN – Kiersten Larkin
Sorry Kiersten!

Thursday, January 22	-	GIFT: Hat, Sock and Glove Collection	
	-	Student Council: Penny Wars	
	-	Begin Quarter 3	
	-	A-Girls Bball Practice	3:50-5:15 PM
	-	B-Girls Bball Practice	5:15-6:45 PM
	-	Hosanna! Singers – MMR	6:30 PM
Friday, January 23	-	GIFT: Hat, Sock and Glove Collection	
	-	Student Council: Penny Wars	
	-	Grades 2 & 3 All-You-Can-Eat Pizza Party	
		From Fundraiser/Cafeteria	2:30 PM
Saturday, January 24	-	Market Day Pick-up (Volunteers @ 9 AM)	9:30-10:15 AM
	-	B-Girls BB v. Sherman Center @ Bethlehem	10:30 AM
	-	B-Boys BB v. Sherman Center @ Bethlehem	11:30 AM
Sunday, January 25	-	Adult Choir Sings	8:00 AM
	-	Grades 5, 6 Sing	10:30 AM
Monday, January 26	-	No School: Inservice Day	

- GIFT: Hat, Sock and Glove Collection
 - A-Girls Bball Practice 3:50-5:15 PM
 - B-Boys Bball Practice 5:15-6:45 PM
 - A-Boys Bball Practice 6:45-8:15 PM
 - SALSA Spelling Bee @ LHS 7:00 PM
- Tuesday, January 27
- GIFT: Hat, Sock and Glove Collection
 - Cheerleading Practice 3:50-5:15 PM
 - B-Girls Bball Practice 5:15-6:45 PM
 - Report Cards Sent Home
- Wednesday, January 28
- GIFT: Hat, Sock and Glove Collection
 - Chapel – Pastor Knippa-Baptisms remembered 9:00 AM
 - A-Girls Bball Practice 3:50-5:15 PM
 - B-Boys Bball Practice 5:15-6:45 PM
 - A-Boys Bball Practice 6:45-8:15 PM

HAPPY BIRTHDAY!

*Happy Birthday to the following students who will be celebrating birthdays this coming week.
God's Blessings on your special day!*

Spencer Schultz–Grade 7–January 23 Zachary Schuh–3K–January 28 Tristan Schneider–Grade 4–January 28

REMINDER – If your financial circumstances have taken a turn during this school term, just a reminder that you can still apply for Free or Reduced Lunches at any time during the year. Application forms are available in the office.

PICTURE / NAME RELEASE – Occasionally the local newspaper or other media wish to come in to the school and photograph / record activities that our students are participating in. Please note that if you DO NOT want us to let your child be photographed or name released, you need to notify the office IN WRITING that this is your wish. No written notification is our assumption that it is then permissible. This needs to be done on a yearly basis to be kept on file. Former student, Chris Davis, is going to be filming a promotional DVD for use by our school. As stated above, if you do NOT want your child to participate, please notify the office IN WRITING. Thank you.

GivingPlus®—A one-of-a-kind gifting program: Thrivent Financial helps our members contribute even more to their favorite Lutheran organizations, unlike any other financial services provider. Through GivingPlus, Thrivent Financial for Lutherans and two of its subsidiaries will add \$1 to every \$2 contributed to enrolled Lutheran organizations by benefits members and those who own Thrivent Mutual Funds and Thrivent Life Insurance Company products.

If you wish to participate in Thrivent GivingPlus this calendar year (2009), you may start marking “Thrivent” on your envelope and making your checks payable to St. John Lutheran School. Please complete the Gift Form (which needs to be completed annually) and submit to the office. Forms may be found in the Fellowship Hall, Narthex or in the Church/School Office. Forms may be completed at any time and will be kept on file until you’ve reached the \$600 maximum.

Any questions, please contact Jerry Thompson (892-6921), Dennis Haasl (451-1775) or Diane Adams in the School Office (893-5114).

January 19-23 Penny Wars: Start saving your loose change because Student Council will again be sponsoring Penny Wars. Last year our students raised \$2,025—incredible!! The money went to Project Angel Hugs and the Olivia McTrusty family. This year, Student Council has decided that all funds raised will be split between Project Angel Hugs and Military Families Connect which is an organization that sends care packages to our troops overseas. Please watch future newsletters for detailed information on how Penny Wars works. Thanks, SJL Student Council

HAT WEEK: During the week of January 19-23, Student Council will be sponsoring “Hat Week” in conjunction with Penny Wars. At a cost of 50 cents **per day**, students may wear a hat to school. They may pay for each day individually, or they may pay for the entire week all at once. On that Friday, total “hat money” will be calculated and each class’s total will be added to their penny total for Penny Wars. All funds raised from Penny Wars and Hat Week will be given to Project Angel Hugs and Military Families Connect (to help with postage when sending care packages to our troops). Thanks for your support – SJL Student Council

Pack the Gym Night will be Friday, January 30th. Girls "A" Team plays at 6:00 p.m. and Boys "A" Team plays at 7:00 p.m. Students will be asked to sign in upon their arrival to know that they were there and the highest class percentage will get a treat.

School Spirit Dress-Up day will also take place on that day. Pep Rally will run from 3:10-3:25 also on that Friday.

Yearbook Cover Contest Entry Deadline Extended: There were very few entries for this year's Yearbook Cover Contest, so we have extended the deadline to February 16. Here are the requirements: Each drawing must have **St. John Lutheran School** somewhere in the picture, along with the years "2008-9" and the school theme which this year is "**Led by God's Grace**". Draw it on plain 8 1/2 x 11 white paper, and use lots of color. Print your name on the back of the drawing, and turn it in to the school office. Drawings will be returned to the artists.

2009 SJL Pizza Sale: Is in progress. We will be making pizza on Saturday, February 21st and weighing and measuring on Friday, February 20th. We will be making regular cheese, pepperoni, and sausage pizzas once again. Prices are 1 or 2 @ \$6.00 each or 3 or more at \$5.00 each. You may order from any St. John School Family or there are order sheets available in the fellowship hall and at the school office to place your individual order. The deadline for order is January 28th. If you have any questions, please contact Nola Schultz at 528-7110 or Rachel Montaba at 893-4829.

Project Angel Hugs which ministers to children with cancer needs your help! In the month of February, we will be sending all of the children enrolled in our program, along with their siblings, a packet of Valentines. We currently have over 200 children enrolled in the program. When the siblings are included we are talking over 300 children. We need Valentines signed by YOU. Ask your youth groups, your co-workers, your Sunday school class, your club members, your family to help us out! Store bought, computer generated, or hand made are all perfect. We request if envelopes are included that they be unsealed and no candy included. Please drop them off at our office at 406 E. Mill Str., Plymouth, next to Dear Old Books. Deadline is Wednesday, February 4th. Any questions, please feel free to call Char at 892-9138.

Project Angel Hugs will be hosting an Angel KISS Workshop on Saturday, January 31st from 10am till 3pm to make Valentine's for children with cancer and their families. Open to all ages. Children under 10 must be accompanied by parent/guardian. We furnish all the supplies...you supply us with your time. No talent necessary...some you only have to color. Great family activity! Come for an hour...or stay longer. To be held at our office at 406 E. Mill Str., Plymouth. Phone Char at 892-9138 with questions.

Lutheran High Open House and Freshman Registration: Sheboygan Area Lutheran High School will be hosting an Open House and Freshman Registration on **Thursday, February 5th** from 4:30-7:00pm. The Open House is for students and families of all grades. Guests will be able to meet with Lutheran High faculty, parents, students, co-curricular directors and coaches, and our academic guidance counselor. Families will be able to get an intimate look at Lutheran High's curriculum, facility, mission focus, and student life. Tours and refreshments are provided. Incoming freshman families will also be able to schedule their classes for the upcoming school year (call if you want a specific appointment time). Open House visitors will also receive free admission to the varsity girls basketball game versus Howards Grove. All are welcome. Check LHS's website (www.lutheranhigh.com) for more information or call (920) 452-3323.

SCRIP Sales for the week of 01-16-09

Total Sales \$16,615.00; Special Orders \$1,630.00;

Tuition Profit \$918.45; General Fund Profit \$446.70 (of which \$240.00 profit is from Kwik Trip sales; Total Gen. Fund Kwik Trip Profits to Date \$12,378.00.)

NEW POLICY--CHECKS MUST BE IN EXACT AMOUNT OF ORDERS. THERE WILL BE NO CASH RETURNED FOR OUT OF STOCK ITEMS. PLEASE DO NOT WRITE YOUR CHECK UNTIL YOU HAVE CONFIRMED THAT YOUR ORDER IS IN STOCK.

SHOPKO: Effective Thursday, January 1, 2009, the profit for Shopko \$25 and \$50 gift cards will decrease from 4% to 2%.

KWIK TRIP is available at a 20% discount in denominations of \$20, \$50, and \$100 gift cards. This promotion is going through FEBRUARY 22, 2009 (While supplies in stock last)!! Orders of more than \$500.00 will need to be placed by special order only. After February 22, our discount will go from 20% to 10% until February 2010 after that date it will go to the regular 5% discount.

Hallmark Gift Cards are now available by **Special Order** in \$25 denominations with a 4% profit. Hallmark Gift Cards may be used for making purchases at any participating Hallmark Gold Crown Store.

What is SCRIP? Gift certificates are purchased at a reduced rate and then sold for face value. For instance if you purchase a \$25.00 card, you pay \$25.00 for it and the difference in what we originally purchased it for becomes the profit. The profit can be applied to the General Fund or the student's tuition of your choice.

*Providing a Christ-centered education focusing on academic,
physical, spiritual, emotional, and social growth;
Preparing students for an active Christian life and eternal salvation.*